

Operating Instructions

- Install and level feeders above raceways.
- Remove red air line input plug (pull red portion while pushing on the blue surrounding ring. Blue ring may be black depending on fitting that is available at the time of construction. (See Figure 1.)
- Plumb air input. The use of ¼" OD DOT approved truck air brake line is recommended. (available at most auto parts retailers)
Air line is to be installed by pushing the line into the air line input fitting.
- Do not exceed 50 PSI operating pressure on feeders of 9 foot or less
feeders greater than 9 feet in length can operate from 75 to 100 psi.
- Electrical supply to be 110 VAC timer.
- After feeder is in place and all air and electrical connections have been made, activate feeder to open position using timer. (on-off switch must be in the on position for feeder operation)
- Adjustments to the opening position must be made with air applied to the air cylinder or the "open position". The feeders are shipped with one-half of the maximum opening possible. (See Figure 2). We recommend using this setting and using timers to control the amount of feed required.

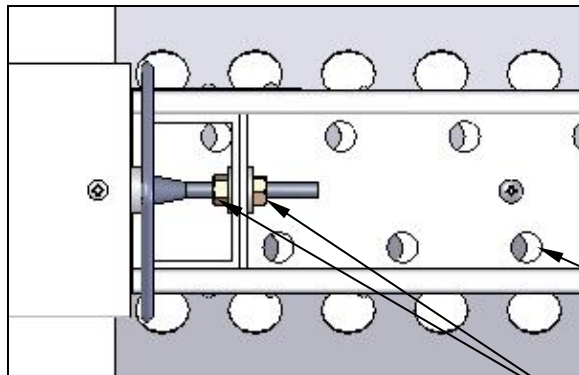


FIGURE 2

Brass Adjustment Nuts
One-Half Opening

NOTE: Air cylinder is retracted in the full open position.

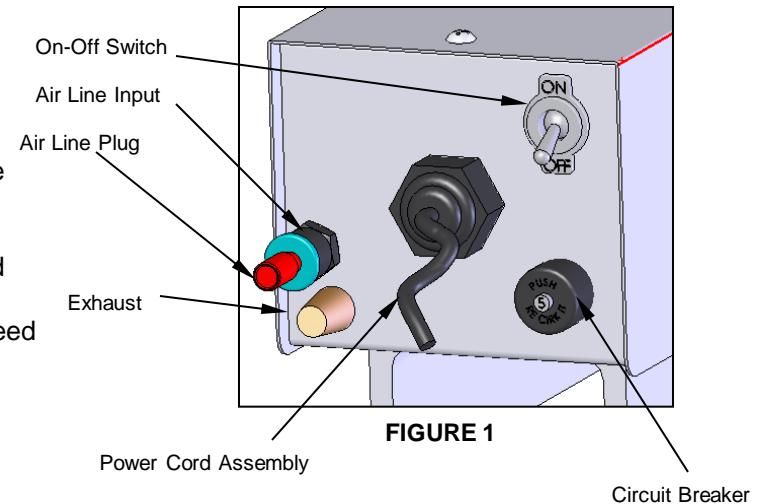


FIGURE 1

- If adjustments are required, loosen brass adjustment nuts and position inner channel to opening desired and re-tighten brass nuts
- Cycle feeder and check opening, re-adjust if necessary.

NOTE: Brass nuts are to be tightened to a snug fit. DO NOT OVER TIGHTEN.

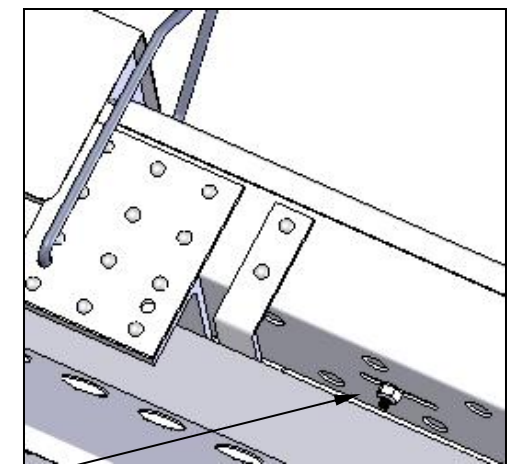
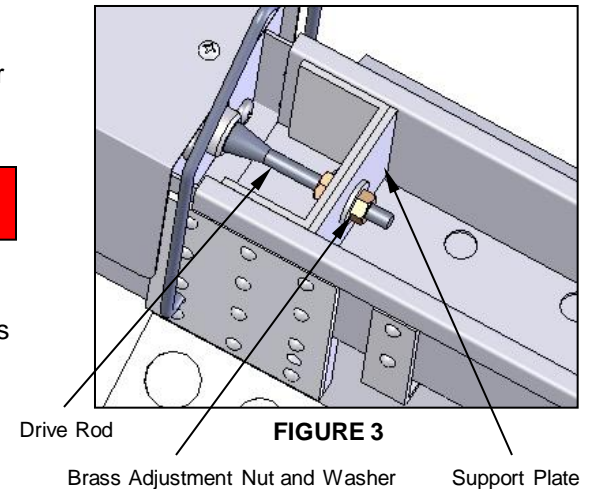
Service Instructions

Depending on the size of feed being used, feed migration between the inner and outer channels can occur. Feed migration can cause binding between the channels and increase operating forces. Follow the steps outlined below to clean the channels.

- Remove brass adjustment nut, washer, and support plate. (only remove the nut and washer identified in the Figure 3)
- Remove the channel retention screws, lock nuts, and washers shown in Figure 4.
- Remove inner channel by lifting the end, opposite of the air cylinder, and sliding the inner away from the air box. After the rod is disengaged remove the inner channel.
- Vacuum the inner and our channels and wipe with a damp cloth.
- Reinstall inner channel.

NOTE: Inner and outer channel are assembled as matched sets, do NOT mix inner channels between feeders.

- Re-install channel retention screws. Installation order: screw, inner channel, outer channel, flat washer (burr side away from channel), and lock nut.
- Tighten channel retention screws to snug and then back them off $\frac{3}{4}$ of a turn. This allows the channels to slide freely.
- Re-install supporting plate, washer, and brass nut. Snug brass nuts, do not over tighten.
- Cycle feeder and check for any issues.



Thank you for your purchase of the Whisperfeeder Model LA feeder.